

- GENERAL NOTES:**
1. VERIFY ALL DIMENSIONS PRIOR TO CONSTRUCTION.
 2. DO NOT SCALE DRAWINGS USE WRITTEN DIMENSIONS.
 3. USE ONLY LATEST REVISED DRAWINGS.
 4. REPORT ALL ERRORS OR OMISSIONS TO THE ARCHITECT OR THE ENGINEER AS APPLICABLE.
 5. THE DRAWINGS ARE THE PROPERTY OF THE ARCHITECT AND ANY UNAUTHORIZED USE IS PROHIBITED.

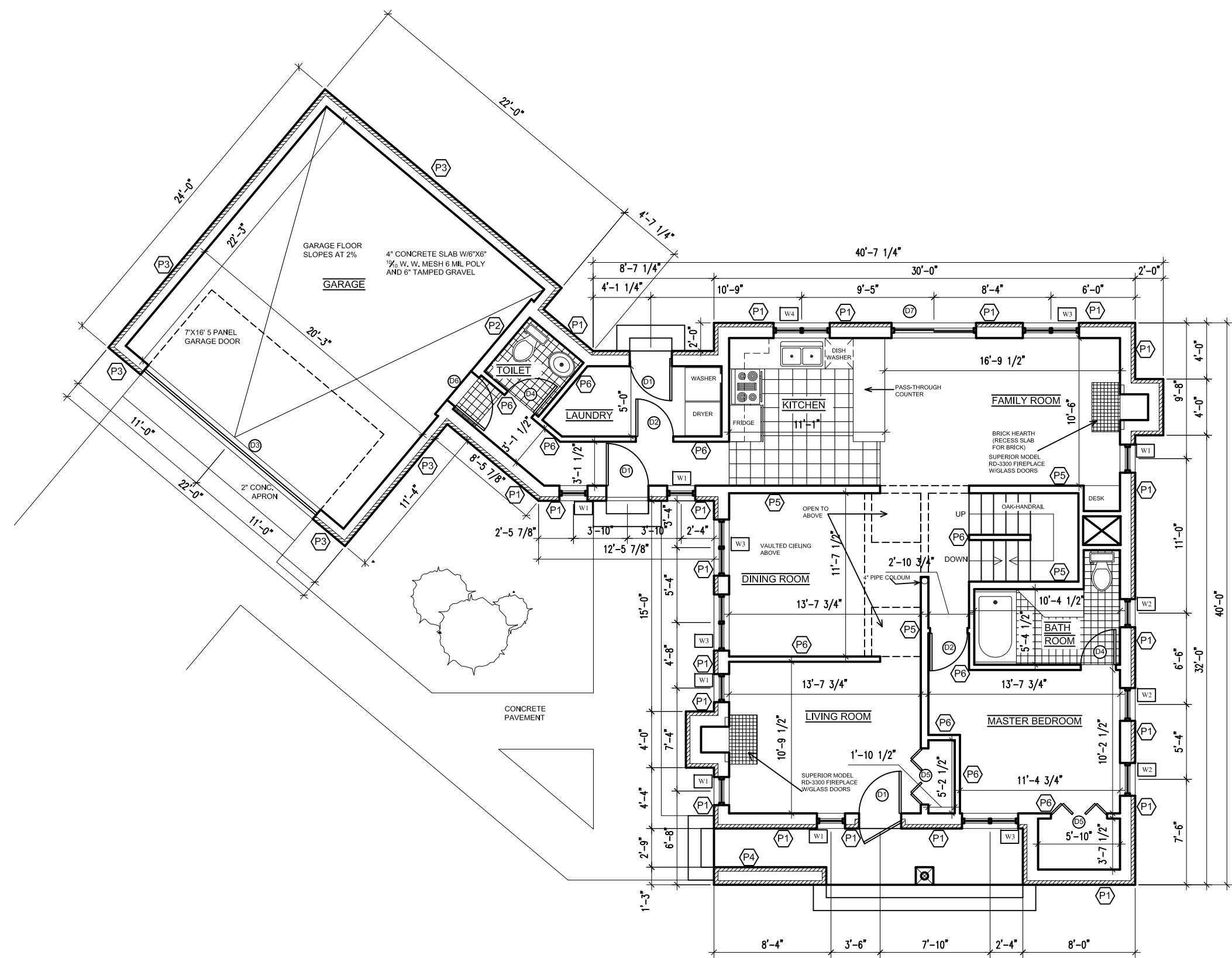
DOOR LEGEND

- D1 ENTRANCE DOOR (3'x7')
- D2 INTERIOR DOOR (2'-8"x7')
- D3 GARAGE DOOR (16'x7')
- D4 INTERIOR DOOR (2'-6"x7')
- D5 CLOSTE DOOR (4'x7')
- D6 GARAGE DOOR (2'-8"x7')
- D7 EXTERIOR GLASS DOOR (6'x7')

WINDOW LEGEND

- W1 CASEMENT WINDOW (2'x4')
- W2 CASEMENT WINDOW (2'-4"x4')
- W3 CASEMENT WINDOW (4'x4')
- W4 CASEMENT WINDOW (4'x3')

- P1 EXTERIOR INSULATED**
 3/8" FACE BRICK
 1" AIR GAP
 2" RIGID INSULATION
 EXTERIOR GRADE PLYWOOD
 2x6 STUDS @ 16" O/C WITH FIBERGLASS BATT INSULATION BETWEEN STUDS
 3 MM POLYETHYLENE VAPOUR BARRIER
 1/2" GYPSUM BOARD
- P2 INSULATED GARAGE WALL**
 3/8" FACE BRICK
 1" AIR GAP
 2" EXTERIOR GRADE PLYWOOD
 2x6 STUDS @ 16" O/C
 1/2" GYPSUM BOARD
- P3 EXTERIOR GARAGE WALL**
 3/8" FACE BRICK
 1" AIR GAP
 2" EXTERIOR GRADE PLYWOOD
 2x6 STUDS @ 16" O/C WITH 3 MM
- P4 EXTERIOR PORCH WALL**
 3/8" FACE BRICK
 1" AIR GAP
 2" EXTERIOR GRADE PLYWOOD
 2x6 STUDS @ 16" O/C
 3/8" FACE BRICK
- P5 LOADBEARING/PLUMBING WALL**
 1/2" GYPSUM BOARD
 2x6 STUDS @ 16" O/C
 1/2" GYPSUM BOARD
- P6 INTERIOR WALL**
 1/2" GYPSUM BOARD
 2x4 STUDS @ 16" O/C
 1/2" GYPSUM BOARD



NO.	8/4/2011	DESCRIPTION
SEAL		
COMPANY:		
PROJECT NAME:	MCLEAN RESIDENCE	
DRAWN BY:	SAINI8	DATE DRAWN: 8/4/2011
SHEET TITLE:	FIRST FLOOR PLAN	
SCALE:	1/8" = 1'	SHEET #
REVISION		A01