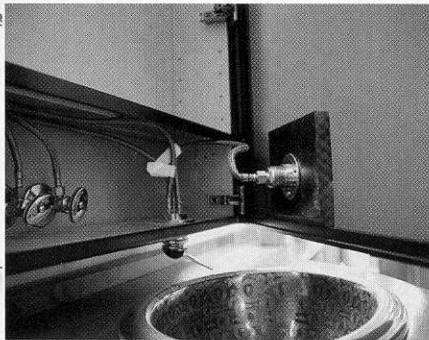


design gallery

SPOTLIGHTING READERS' WORK

Select kitchens and baths

Every year, we seek submissions for the cream of the crop in kitchen and bath design, and every year, our basket runneth over. We receive more outstanding projects than we can fit into the pages of the magazine. To compensate, we use this department to showcase other projects that deserve to be seen. Enjoy this year's crop, and don't forget to submit your own designs for next year's *Kitchens & Baths*.



MIRROR, MIRROR, WATERFALL

Despite the graceful sweep of the cherry counter, the main attraction of this powder room is the faucet and mirror combination. Fed by a flexible line, the faucet allows full access to the medicine cabinet (inset).

Design: Greene & Proppe Design, Chicago

Fixtures: Kohler

Photos: Charles Bickford



DAYLIGHTING THROUGH THE CABINETS

Glass block stacked under an arch became a natural-light bonanza in this kitchen remodel. Upper cabinets positioned at each end of the backsplash arch have partially glazed backs that don't get in the way of sunlight.

Design: Warren Architecture, Woodbridge, Conn.

Cabinetry: Kitchens by Gedney

Photo: Maggie Cole



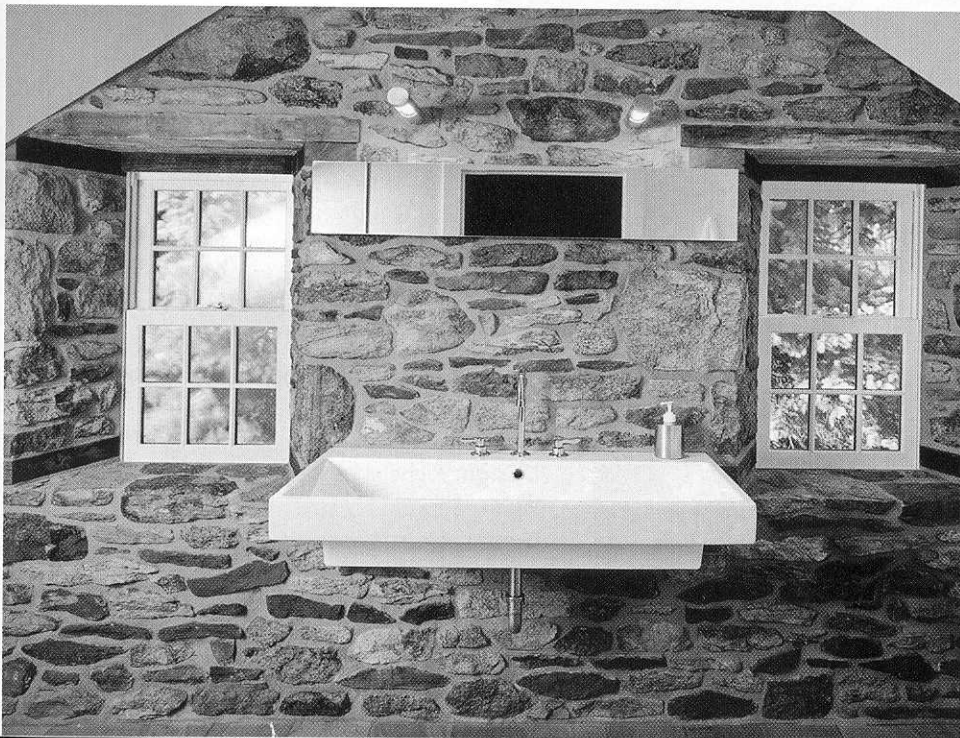
THE SERENITY OF CLEAN LINES

Part of an island house in the Northwest, this kitchen was built with a traditional Japanese sensibility. A spine of exposed steel supports a clerestory over the center of the room; its light is augmented by shoji-like windows that combine clear and opaque glass. The eating area backs up to a section of fir cabinets. A recess below the counter echoes the steel frame.

Design: Prentiss Architects Inc., Seattle

Construction: Bob Mancuso

Photo: Jeff Mason



GROWN FROM STONE

This traditional Pennsylvania farmhouse has 24-in.-thick fieldstone walls that had been hidden behind a layer of plaster. To reclaim the character of the stone, the builder stripped the plaster, then disassembled the stone to accommodate plumbing and wiring. A narrow mirror floats above the sink.

Design and construction: Brett King, Quakertown, Pa.

Photo: Randl Bye



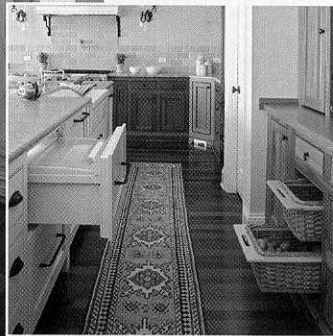
A BUILT-IN WITH LOTS OF PRESENCE

A massive cypress hutch is the focal point of this new Florida kitchen. Although nearly 10 ft. in length, the piece's weight is lightened by glass doors and a central display area. Sliding basket drawers below add another layer of texture and utility.

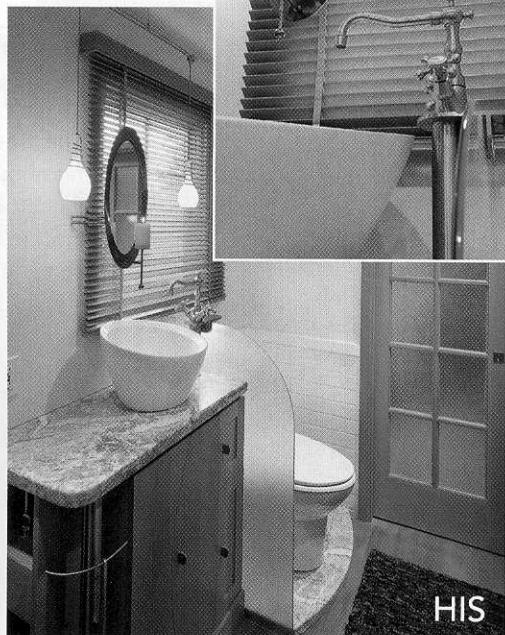
Design: In Detail Kitchen & Bath, Pensacola, Fla.

Construction: Advanced Interiors

Photos: Storybook Studios



HERS



HIS



HIS AND HERS COEXIST IN THEIRS

With less than 55 sq. ft. of space, this remodeled bath includes two separate vanities, a shower, and a toilet.

A pocket door, wall- and side-mounted faucets, and shallow cabinets all contribute to the spatial economy. The side-mounted faucet (above) was combined with a puck fixture for a night-light.

Design: Richard Landon, Bellevue, Wash.

Construction: Nygard's Custom Cabinetry

Photos: John Edwards



TAKING THE AIR

An integral part of an outdoor space of pool and patio, this garden bathroom was built onto the back of a granite fireplace. The owners found the carved-marble sink while traveling. The toilet is plumbed and has an automatic flush. Gatelike doors with basket-weave panels offer privacy; like the toilet surround, they're made of red cedar.

Design: Hutker Architects, Vineyard Haven, Mass.

Masonry: Kenneth Lane

Photos: Brian Vanden Brink

A NICHE FOR THE TUB

As part of a bath remodel, this tub surround was designed with traditional Japanese and Turkish soaking tubs in mind. The wood is tongue-and-groove Douglas fir recycled from the wall of the old bath. A slatted seat stores towels and makes for an easy transition into the water.

Design and construction:

Stephan Wynn,
sageArc Inc., Seattle

Photo: Yoram Bernet



SINUOUS SHADOWLINES

A sheet of perforated steel screen swims below a heavy butcher-block counter, while a thinner strip of the same material accents a hanging shelf above, creating a dramatic lighting effect. Small attachment points in the floor and the hanging shelf reinforce the screen's structure.

Design, construction, and photo: John Nourbakhsh and Toby Witte (Dialect Design), Concord, N.C.





DIVIDING A ROOM WITH STYLE

Once a dark space without windows (inset), this bright new kitchen is the beneficiary of a remodel that knocked down walls and replaced them with floor-to-ceiling cabinetry. The glassed upper section allows plenty of light to pass into the working area.

Design: jfa architecture, Wyncote, Pa.

Construction: Buildcrafters Construction, Art McKeown

Photos: Joseph F. Augustine



BATHROOM GOES DECO

A big-city renovation gave this bathroom a great sense of style by mixing broad bands of subway tile, a period pedestal sink, and sleek frameless glass. A small window in the shower plays natural light across the gleaming walls.

Design: Rawlings Design Inc., New York

Construction: Sasa Renovations Inc.

Photo: Tad Mike